



# CHAPEL-EN-LE-FRITH PARISH COUNCIL

## Spring Newsletter 2019

[www.chapelpc.org](http://www.chapelpc.org)

## Would YOU like to be a Parish Councillor?

Parish Councils are at the heart of local communities and form a key part of the democratic process. They give people a say at a very local level on proposals which affect them.

The Council has 13 Councillors who work together to make decisions on behalf of the Council to achieve the best possible outcome for the local community.

Chapel-en-le-Frith Parish Council provides local facilities which include the Town Hall in Chapel-en-le-Frith, Parks, Open Spaces and Allotments.

The Parish Council is a Statutory Consultee on planning applications within the Parish boundary.

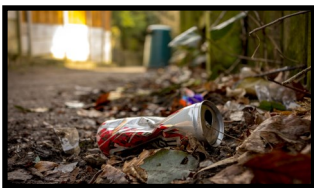
In 2015 the Council produced the Chapel-en-le-Frith Neighbourhood Plan in conjunction with Chapel Vision. It will help determine future development in the Parish until 2028.

The Parish Council works in partnership with the Peak District National Park and is also working with High Peak Borough Council and Derbyshire County Council to bring forward economic regeneration in the Parish and has an interest in the Chapel Leisure Centre.

The Parish Councillors are unpaid volunteers elected to represent four Wards in the Parish. If you are passionate about your community and you can commit time on an ongoing and regular basis, you are encouraged to consider standing for election in May 2019. Further information can be obtained from High Peak Borough Council Elections Office at Buxton Town Hall.  
Tel: 01298 28400

<https://www.highpeak.gov.uk/article/3558/2019-Elections>

## HELP TO KEEP THE PARISH CLEAN AND TIDY



Litter is an ongoing problem around the Parish and on the A6 bypass.

The Council is contacting local businesses to ask them to increase litter picking around their premises and are asking local Schools to engage with young people on this issue.

The Council is grateful to individual Councillors and residents, together with a local group of community volunteers, who litter pick on a regular basis. Please spare a thought and dispose of your litter responsibly in a bin or take it home.



ChapelenleFrith Parish Council

So that the Parks and Open Spaces in the Parish may be enjoyed by everyone the Parish Council is reminding all dog owners to clean up after their dogs as the Council is receiving an increasing number of complaints that responsible dog owners who scoop their dog's poop are being seriously let down by a small minority.

Apart from the mess there are serious health implications as toxocarasis can be transmitted by dog faeces.

**It is every owners duty to clean up after their dog. There are no excuses. Fouling is unacceptable.**



Parish Office, Town Hall, Market Street, Chapel-en-le-Frith, High Peak, SK23 0HP

Tel: 01298 813320

Email: [clerk@chapelpc.org](mailto:clerk@chapelpc.org)

Clerk of the Council Mrs S Stockdale

## Dates for your Diary

- Annual Parish Meeting—Wednesday 24th April 2019 at 7.30pm, Chapel Town Hall
- Chapel Carnival Saturday 15th June 2019
- Chapel Well Dressing 6th—13th July 2019

## What's on at Chapel Town Hall

The Town Hall is the meeting place for a variety of classes and local groups

**Monday Chapel Ladies' Choir**

**Tuesday Pilates class and Zumba class**

**Wednesday Weight Watchers W.I. and Garden Club**

**Thursday Ju-jitsu**

**Friday Pilates class, Pre-School children's Dance class**

**Saturday Children's Dance classes**

**Coming in March.....**

**Yoga class**

**Coming in May.....**

**Mindfulness and Wellbeing class**

**Further information can be found on the Parish Council Website or by emailing [astclerk@chapelpc.org](mailto:astclerk@chapelpc.org)**



Presenting a new lectern to Chapel-en-le Frith Parish Council for use in the Town Hall, Mrs Beryl Martin said, 'One of the last instructions made by my late husband Guy Martin was that a gift be made to the parish. Guy worked tirelessly in helping to bring the Town Hall into the twenty-first century and making its facilities better

for the people of Chapel, so I hope that the provision of a new lectern will be an appropriate means of carrying on Guy's good work.'

Accepting the gift. Mike Evanson, the Chairman of the Parish Council, said that the lectern will not only be a useful addition to the facilities in the Town Hall, but will also serve as a fitting memorial to a very committed and hard-working councillor who served on the council from 2003 until his death in 2018

## Why no Swimming Pool ?

We are providing the following information in response to recent queries about the absence of a swimming pool in Chapel-en-le-Frith:

In 1988 Chapel Leisure Centre Committee was formed with the purpose of providing leisure facilities for the community and several fundraising events took place. In 1998 the Council made a bid to the National Lottery to fund a community Leisure Centre. During a consultation process residents were clearly informed that the English Sports Council would not support the funding of a swimming pool, because pools already existed in Buxton, Glossop and New Mills. Although the bid to the National Lottery was unsuccessful, a Leisure Centre was obtained as part of the Private Finance Initiative which resulted in the new High School in Chapel-en-le-Frith. The funds raised by Chapel Leisure Centre Committee were used to help bring this project to fruition.

## [www.chapelpc.org](http://www.chapelpc.org)

Find Parish Council news and all about living, working and visiting the Parish



Members of the public are welcome to speak in the Open Forum at the Full Council meeting held in the Annexe of the Town Hall on the first Tuesday in the month and at the Planning Committee. Dates of meetings can be found on the website and on the Town Hall Notice Board.

## Your Parish Councillors

### CHAPEL EAST

Clr D King 811029  
Clr M Morrison 811765  
Clr M Smith 812706

### CHAPEL WEST

Clr J Adshead - [generalsolutions1969@gmail.com](mailto:generalsolutions1969@gmail.com) Clr C Lawley 07535415060  
Clr J Brook 938680 Clr N Gourlay 815410  
Clr T Norton 814190 Clr S Young 812304

### COMBS & WHITEHOUGH

Clr M Evanson 815030  
Clr FP Harrison 812081

### DOVE HOLES & MARTINSIDE

Clr H Batterbee 813027 Clr J Street 813543